



Note on WLAN Registration Information

Addendum to the Operator's Manual for the CoaguChek Pro II meter

This multilingual document contains information on WLAN registration in various countries.

Hinweis zu Informationen zur WLAN-Registrierung

Ergänzung zum Benutzerhandbuch für das CoaguChek Pro II Messgerät

Dieses mehrsprachige Dokument enthält Informationen zur WLAN-Registrierung in verschiedenen Ländern.

Remarque concernant les informations d'enregistrement du WLAN

Addendum pour le manuel de l'opérateur du lecteur CoaguChek Pro II

Ce document multilingue contient des informations concernant l'enregistrement du WLAN dans divers pays.

Nota sulle informazioni di registrazione alla WLAN

Appendice al Manuale Operatore dello strumento di misurazione

CoaguChek Pro II

Questo documento in più lingue contiene informazioni sulla registrazione alle reti WLAN in vari Paesi.

Nota sobre la información de registro de WLAN

Anexo para el Manual del usuario del medidor CoaguChek Pro II

Este documento multilingüe contiene información sobre el registro de WLAN en varios países.

Nota sobre informações de registo WLAN

Anexo ao Manual do operador do aparelho CoaguChek Pro II

Este documento multilingue contém informações sobre o registo WLAN em vários países.

Opmerking m.b.t. WLAN-registratie-informatie

Aanvulling op de Handleiding van de CoaguChek Pro II-meter

Dit meertalige document bevat informatie m.b.t. WLAN-registratie in verschillende landen.

Bemærkning vedrørende WLAN-registreringsoplysninger

Tillæg til brugermanualen til CoaguChek Pro II-instrumentet

Dette flersprogede dokument indeholder oplysninger om WLAN-registrering i forskellige lande.

Kommentar till information om WLAN-registrering

Tillägg till användarhandboken för CoaguChek Pro II-mätaren

I det här flerspråkiga dokumentet finns information om WLAN-registrering i olika länder.

Merknad om informasjon om WLAN-registrering

Tillegg til bruksanvisningen for CoaguChek Pro II-apparatet

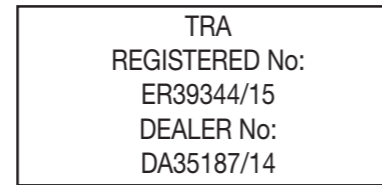
Dette flerspråklige dokumentet inneholder informasjon om WLAN-registrering i ulike land.

WLAN-rekisteröintitietoja koskeva huomautus

Lisäys CoaguChek Pro II -mittarin käyttöohjeeseen

Tämä monikielinen asiakirja sisältää tietoa WLAN-rekisteröinnistä eri maissa.

Abu Dhabi/Dubai/United Arab. Emirates:



Australia/ New Caledonia/New Zealand:



The compliance mark indicates that the product complies with the applicable standard and establishes a traceable link between the equipment and the manufacturer, importer or their agent responsible for compliance and for placing it on the Australian and New Zealand market.

Brazil:

Modelo: CoaguChek Pro II



4552-15-5748

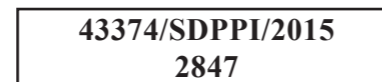
Resolution nº 506:

“Este equipamento opera em caráter secundário, isto é, não tem direito a proteção contra interferência prejudicial, mesmo de estações do mesmo tipo, e não pode causar interferência a sistemas operando em caráter primário.”

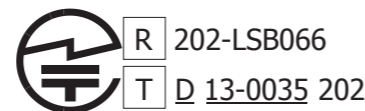
India

Approval No: NR-ETA/2083

Indonesia:



Japan:



This device is granted pursuant to the Japanese Radio Law (電波法) and the Japanese Telecommunications Business Law (電気通信事業法). This device should not be modified (otherwise the granted designation number will become invalid).

Mexico:

La operación de este equipo está sujeta a las siguientes dos condiciones: (1) es posible que este equipo o dispositivo no cause interferencia perjudicial y (2) este equipo o dispositivo debe aceptar cualquier interferencia, incluyendo la que pueda causar su operación no deseada.

Pakistan:



Philippines:



Russia:



Singapore:



South Africa:



South Korea:



B급 기기 (가정용 방송통신기자재)
이 기기는 가정용(B급) 전자파적합기기로서 주로 가정에서 사용하는 것을 목적으로 하며, 모든 지역에서 사용할 수 있습니다.
해당 무선 설비는 운용 중 전파혼신 가능성이 있음
MSIP-CRM-RPD-CCProll

Taiwan:



USA/Canada:



Changes or modifications made to this equipment not expressly approved by Roche Diagnostics may void the FCC authorization to operate this equipment.

This device complies with Part 15 of the FCC Rules and with RSS-210 of Industry Canada. Operation is subject to the following two conditions:

(1) this device may not cause harmful interference,

and

(2) this device must accept any interference received, including interference that may cause undesired operation.

The CoaguChek Pro II system complies with FCC radiation exposure limits set forth for an uncontrolled environment. This equipment should be installed and operated with minimum distance of 20 cm (8 inches) between the radiator and your body.

This transmitter must not be co-located or operated in conjunction with any other antenna or transmitter.

This equipment has been tested and found to comply with the limits for a Class B digital device, pursuant to Part 15 of the FCC Rules. These limits are designed to provide reasonable protection against harmful interference in a residential installation. This equipment generates, uses and can radiate radio frequency energy and, if not installed and used in accordance with the instructions, may cause harmful interference to radio communications. However, there is no guarantee that interference will not occur in a particular installation. If this equipment does cause harmful interference to radio or television reception, which can be determined by powering the equipment off and on, the user is encouraged to try to correct the interference by one or more of the following measures:

- Reorient or relocate the receiving antenna.
- Increase the separation between the equipment and receiver.
- Connect the equipment into an outlet on a circuit different from that to which the receiver is connected.
- Consult the dealer or an experienced radio/TV technician for help.

Le présent appareil est conforme aux CNR d'Industrie Canada applicables aux appareils radio exempts de licence. L'exploitation est autorisée aux deux conditions suivantes:

(1) l'appareil ne doit pas produire de brouillage,

et

(2) l'utilisateur de l'appareil doit accepter tout brouillage radioélectrique subi, même si le brouillage est susceptible d'en compromettre le fonctionnement.


Cet équipement est conforme aux limites d'exposition aux rayonnements IC établies pour un environnement non contrôlé. Cet équipement doit être installé et utilisé avec un minimum de 20 cm de distance entre la source de rayonnement et votre corps.

Vietnam:



COAGUCHEK is a trademark of Roche.

©2015-2017 Roche Diagnostics GmbH

 Roche Diagnostics GmbH
Sandhofer Strasse 116
68305 Mannheim, Germany

www.roche.com
www.coaguchek.com
www.poc.roche.com