



**"I know my value."  
You too can be more involved in  
your anticoagulation therapy**

[Find out more](#)

[Training & Support](#) > [CoaguChek IN Range Firmware Update](#)

## CoaguChek INRange Firmware Update

*The following steps describe the firmware update process for the CoaguChek INRange system via USB.*

### Firmware files

30-May-2018

[Update](#) 01.04.14-YT

[Release Notes](#)

### Prerequisites

- ◆ CoaguChek INRange meter
- ◆ USB Type-A to Micro-USB cable (included in package)
- ◆ Full AAA Batteries (Alkaline)
- ◆ Windows or Mac Computer
- ◆ Firmware file provided on this page (01.04.xx-YT.znu)

### Update Instructions - PDF

[How to update my CoaguChek INRange](#)



Prerequisite

### Step 1 - Prepare Meter for Firmware Update



- ◆ Insert Batteries



- ◆ Go to Menu "Other"  
press arrow down button



- ◆ Go to "Firmware Update"  
press arrow down button

- ◆ Power on CoaguChek INRange Meter  
*press on/off button*

- ◆ Select Menu "Other"  
*press enter button*

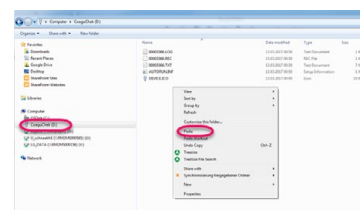
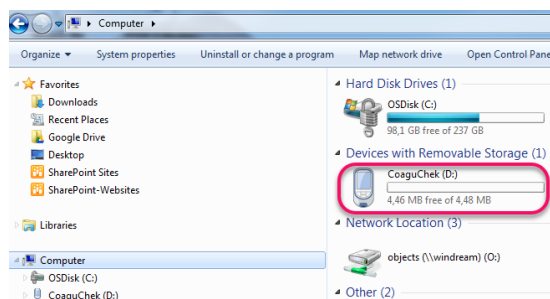
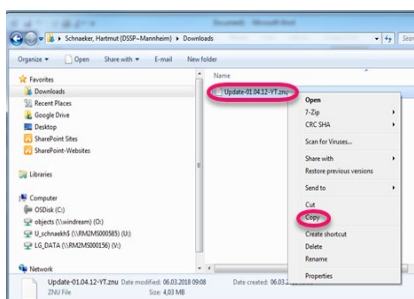
- ◆ Select "Firmware Update"  
*press enter button*

## Step 2 - Connect Meter with Computer



- ◆ Make sure computer is powered on and user is logged in
- ◆ Connect Micro-USB cable with meter
- ◆ Connect USB cable to computer
- ◆ Display on meter will show "For Firmware Update copy file to INRange-Drive"

## Step 3 - Copy Update File to Meter



- ◆ Download Update file to computer (if not already done)
- ◆ Locate the file in Windows Explorer or Finder (Mac)
- ◆ Select file, e.g. "Update01.04.xx-YT.znu"
- ◆ Right click on file "Update01.04.xx-YT.znu" and select "Copy"; alternatively, press CTRL + C or CMD + C (Mac)
- ◆ Locate CoaguChek INRange meter in your Windows Explorer or Finder (Mac) - It will be listed as a local drive - like a USB memory stick
- ◆ Select CoaguChek INRange meter in your Windows Explorer or Finder (Mac)
- ◆ Right click inside CoaguChek INRange and select "Paste"; alternatively, press CTRL + V or CMD + V (Mac)



- ◆ Update process is started



- ◆ CoaguChek INRange will execute the update automatically within several minutes
- ◆ Displays will automatically change during the update process

### Step 4 - Verify Firmware Version



- ◆ Wait until meter automatically powers off after the update process
- ◆ Turn on the meter  
*Press on/off button*



- ◆ Go to Menu "Other"  
*press arrow down button*
- ◆ Select Menu "Other"  
*press enter button*



- ◆ Select "About"  
*press enter button*
- ◆ Check for Firmware "Update01.04.xx-YT" on the display

If Firmware listed on display is different than "01.04.xx YT", the update is not complete. Please try again to update the CoaguChek INRange meter by repeating the steps described. If the update still does not work, please contact Roche Diagnostics.